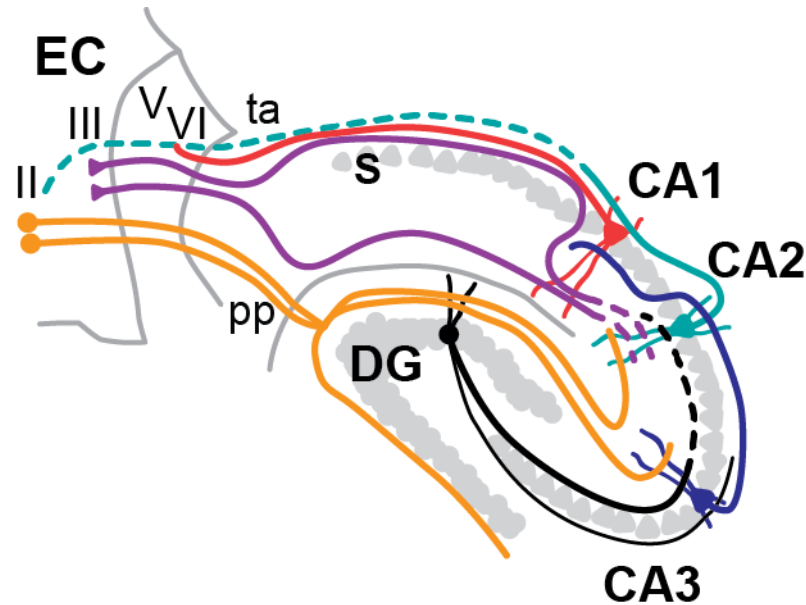


The contributions of distinct subregions of hippocampus to *what-where-when* memory

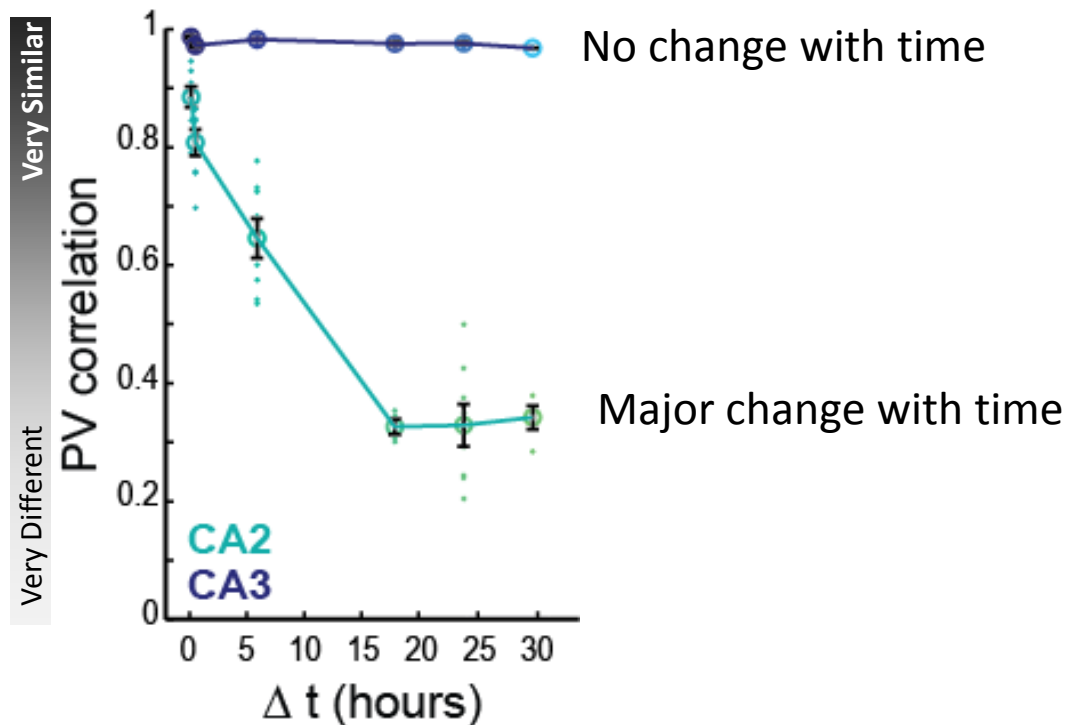
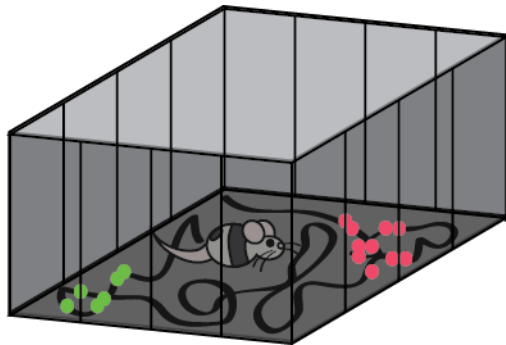
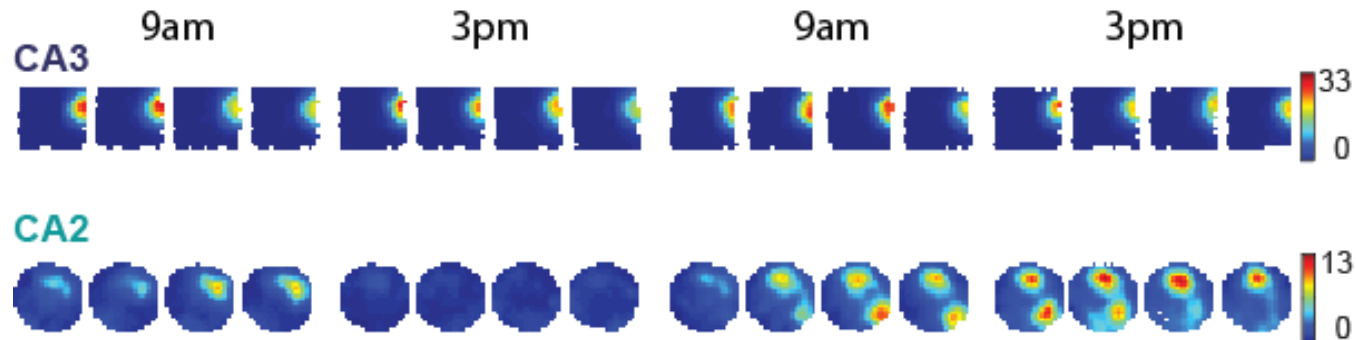
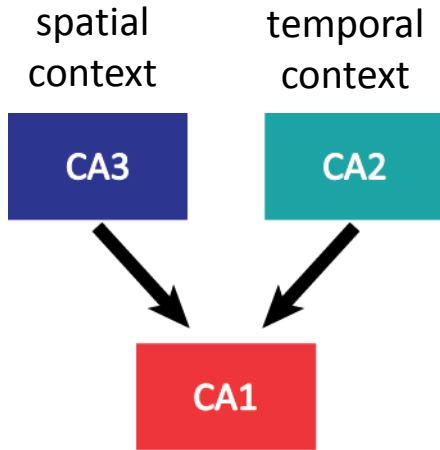


Emily Mankin

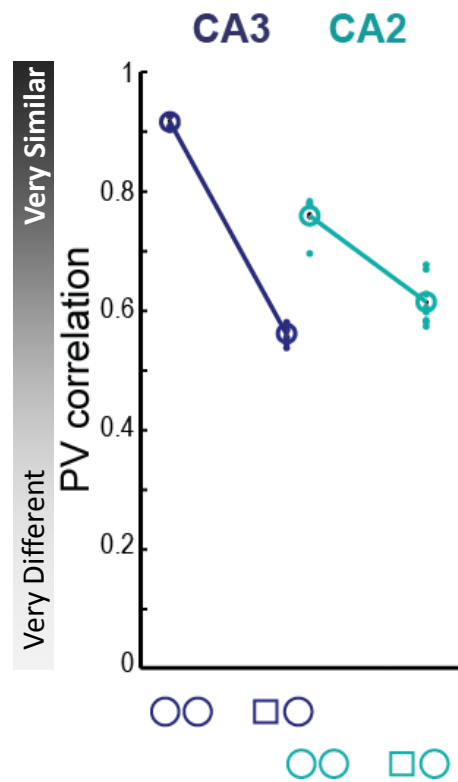
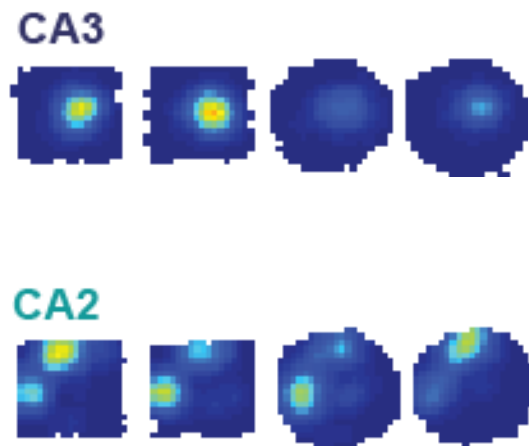
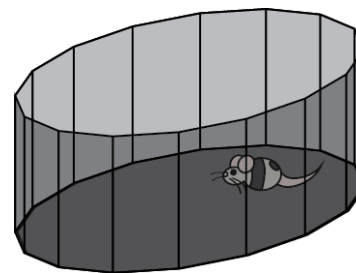
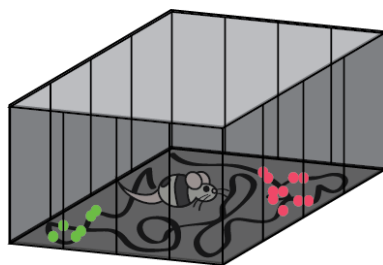
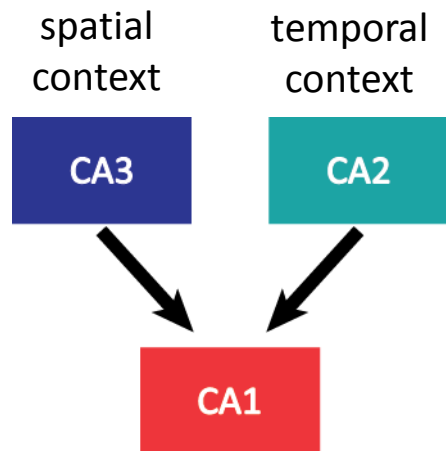
INC Spring Retreat

May 10, 2014

CA3 is stable over time, while CA2 changes significantly.



CA3 reliably differentiates between distinct contexts, while CA2 does not.



CA1 reflects coding strategies of CA2 and CA3 to simultaneously represent *what, where, and when*.

